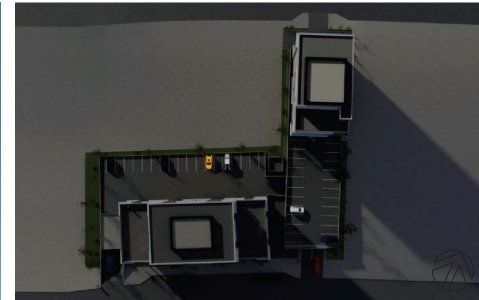




1 VIEW FROM NORTH-WEST ALONG DUFFERIN CRESCENT



2 VIEW FROM SOUTH-EAST ALONG SEAFIELD CRESCENT



DECEMBER AT 3PM



MARCH AT 3PM



JUNE AT 3PM



SEPTEMBER AT 3PM



O.C.A. ARCHITECTURE INC.  
2724 W. 7th AVENUE, VANCOUVER BC V6M 1H3  
Tel: 604-408-8970 Email: info@oca-arch.com

CONTRACTOR TO CHECK AND VERIFY ALL DIMENSIONS AND LEVELS PRIOR TO COMMENCING ANY WORK. ALL DISCREPANCIES, ERRORS OR OMISSIONS TO BE REPORTED TO THE ARCHITECT IMMEDIATELY. ALL DRAWINGS, SPECIFICATIONS AND RELATED DOCUMENTS ARE THE COPYRIGHT PROPERTY OF THE ARCHITECT. REPRODUCTION OF THE DRAWINGS, SPECIFICATIONS AND RELATED DOCUMENTS WITHOUT THE ARCHITECT'S WRITTEN CONSENT.

1  
Revision:

1 REVISION & IP 6/16/25

Project:

DUFFERIN/SEAFIELD  
1135 DUFFERIN CRESCENT  
1136, 1146, 1158 & 1166 SEAFIELD CRESCENT  
NANAIMO, B.C.

Drawing Title:  
RENDERINGS & SHADING STUDIES



Scale: 1/32"=1'-0"  
Drawn By:  
Checked By:  
Project Number: 2215  
Date: OCT. 2023  
Drawing Number:

A05.1

RECEIVED  
RA530  
2025-JUN-17  
Current Planning